

440

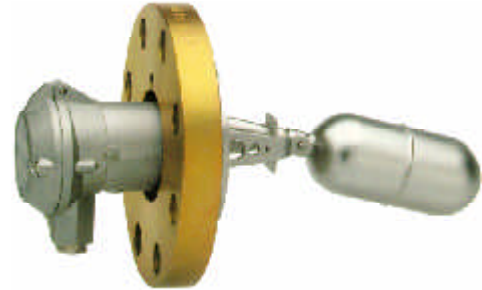
Level Switch



One float magnetic level switch for side mounting with one switching equipment. For pressure up to 25 Bar, for temperature up to 100°C and for media with a specific weight of min. 0.7 kg/dm³

Differential value for B road and A support length

B	Differential		
	A = 45	A = 95	A = 145
100	60	30	19
150	80	40	25
200	100	50	31
250	120	60	37
300	140	70	43
350	160	80	49
400	180	90	55
450	200	100	61
500	220	110	67



Floats

D	E	Applications
48	93	With all type of flanges
69	120	For UNI/DIN ND 65-80(ANSI 2 1/2" -3")only

Standard flange connection (C)

- UNI/DIN ND 50 NP10 - NP25 - ANSI 2" 150 RF - 300 RF - weight Kg 3.7
- UNI/DIN ND 65 NP10 - NP25 - ANSI 2 1/2" 150 RF - 300 RF - weight Kg 4.5
- UNI/DIN ND 80 NP10 - NP25 - ANSI 3" 150 RF - 300 RF - weight Kg 5.0

Material	AISI 304	AISI 316	PVC	Moplen	PVDF
Inner parts code (flange and float)	I	J	P	M	D

- For PVC, moplen and PVDF instruments max. working pressure 5 Bar
- For PVC, instruments max. working temperature 70°C

Switches

Micro switch 220V a.c. - 5A (M1)

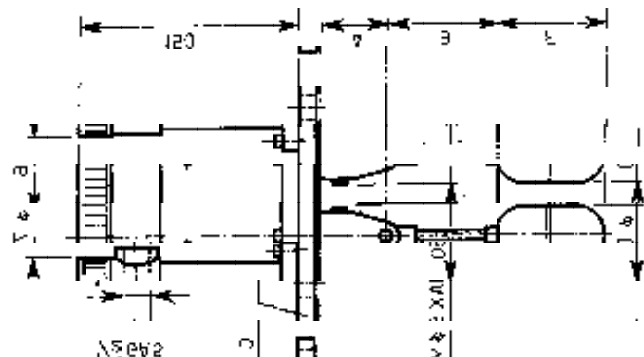
Cases

- N Standard IP 45
- WP Water-proof IP-55

How to order?

Example : 10-I-WP-100-95-2" 150 RF

- 10** Model
- I** Float and connection flange «C» material
- WP** Water-Proof housing
- 100** Road length «B»
- 95** Support length «A»
- 2" 150 RF** Type of connection flange



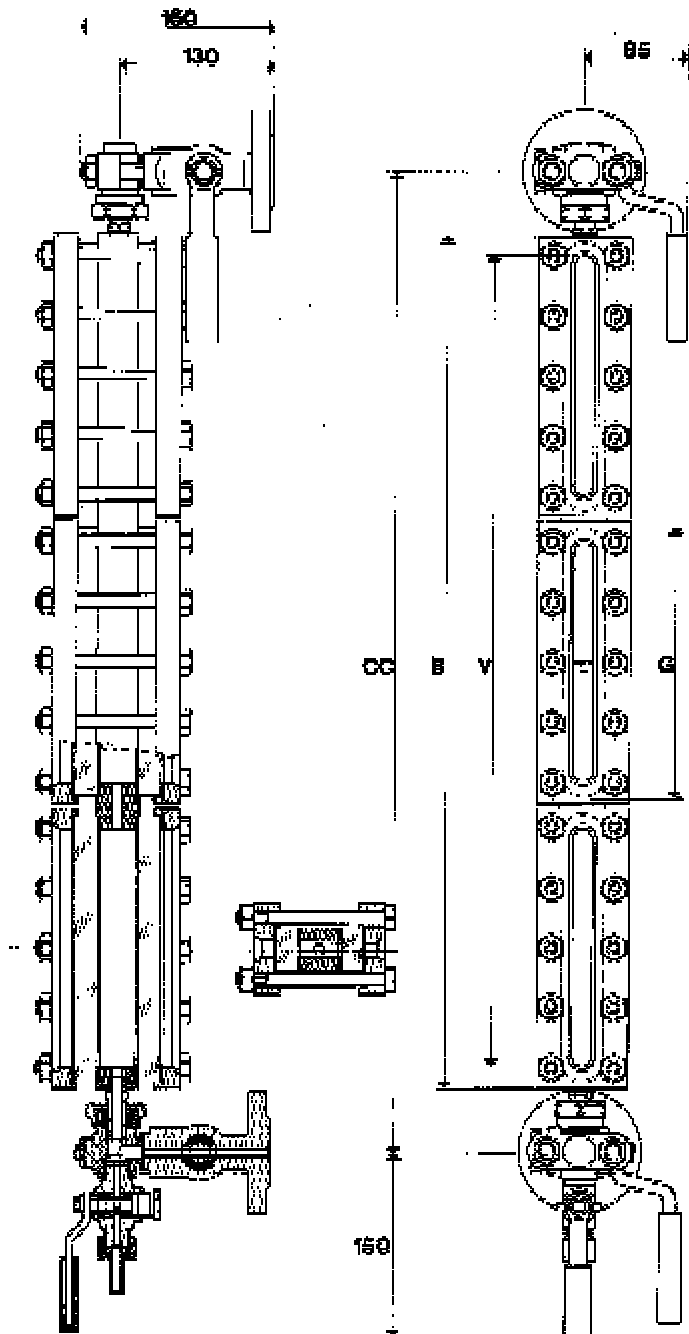
The following datas are required: type of media, specific weight, temperature and pressure

440 Level Gauge



- Connections between gauge and cocks are made
 - for **440-23-G11** by end tubes and stuffing boxes
 - for **440-23-G12** by NPT screwed nipples.
- According to the right or left position of the cock handles on the gauge body, the level gauges are named right-handed or left handed shows a right-handed level gauge. Usually two level gauges (1 right and 1 left) are installed on steam vessels.
- According to some Steam Boiler Regulations, the visible length of the level gauges installed in steam boilers must be not shorter than a fixed length. Therefore the suitability of the smaller sizes must be checked.
- For 440-23-G11 the minimum C. to C. distance (CC min) we can reach by means of special end tubes is 15 mm shorter than the dimension shown in the table.
- When ordering a level gauge please state
 - Centre to centre distance between connections (CC)
 - Standard, Size and Finishing of connections
 - Whether right-handed or left-handed.

- Flanges are finished to customer prescriptions. Please state:
 - Standard
 - Size
 - Finishing
 - Pressure class
 Standards: ANSI, AFNOR, BS, DIN, GOST, UNI, etc.
 The inside passage through the gauge is 10 mm.
- Instead of flanges, connections can be delivered with threaded ends. Standard is 3/4" NPT, union. Other Standard and size on request.
- 440-23 gauges are fitted with transparent glasses type B.
- Operating conditions and material schedules on pages 4 and 5. Graph below shows ratings for size 9 and smaller, combined included.
- Applicable optionals and bolting torques
- Gauge bodies without cocks can be supplied
 - end connected (threaded or flanged)
 - side connected (threaded or flanged)
 - back connected (threaded or flanged).
 Please state connecting dimensions and Standard.



Size	C to C distance		Length of body B	Visible length V	Length of glass G	Weight kg
	440-23-G11 CC min	440-23-G12 CC min				
1	235	184	128	93	115	10.90
2	260	209	153	118	140	11.50
3	285	234	178	143	165	12.30
4	310	259	203	168	190	12.90
5	340	289	233	198	220	13.90
6	370	319	263	228	250	14.65
7	400	348	293	258	280	15.60
8	440	389	333	298	320	16.70
9	460	409	353	318	340	17.40
2 x 4	515	464	408	473	190	18.90
2 x 5	575	524	468	433	220	20.85
2 x 6	635	584	528	493	250	22.45
2 x 7	695	644	588	553	280	24.50
2 x 8	775	724	668	633	320	26.70
2 x 9	815	764	708	673	340	27.70
3 x 6	900	849	793	758	250	30.30
3 x 7	990	939	883	848	280	33.20
3 x 8	1110	1059	1003	968	320	36.45
3 x 9	1170	1119	1063	1028	340	38.60
4 x 7	1285	1234	1178	1143	280	41.95
4 x 8	1445	1394	1338	1303	320	46.30
4 x 9	1525	1474	1418	1383	340	49.20
5 x 7	1580	1529	1473	1438	280	50.75
5 x 8	1780	1729	1673	1638	320	56.20
5 x 9	1880	1829	1773	1738	340	59.80
6 x 8	2115	2064	2008	1973	320	66.10
6 x 9	2235	2184	2128	2093	340	70.40
7 x 9	2590	2539	2483	2448	340	80.95

